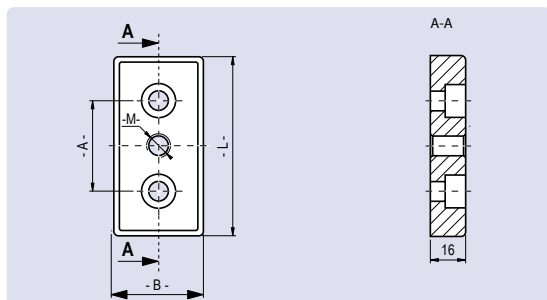
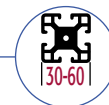


Placa de Montaje 30

Zamak

Transport and Base Plate 30

Die-Cast Zinc



Aplicación
Application



Aplicación Para montar pies niveladores, ruedas para perfil, ganchos o componentes similares
Estos se conectan a los perfiles por un extremo

Application To mount levelling feet, rollers, hooks or similar components
Connects to the profile sideways

Material Zamak

Material Die-cast zinc

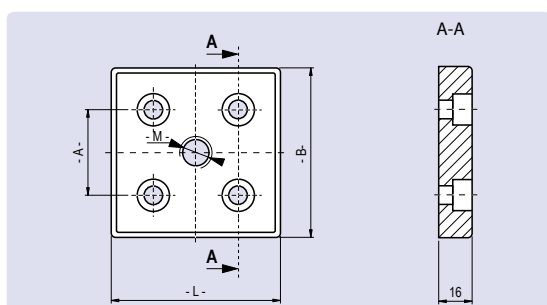
Recubrimiento Epoxy negro / Cincado

Surface Black powder coated / zinc plated

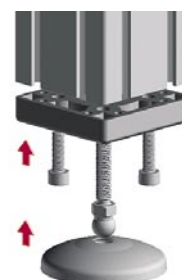
Agujeros de montaje para tornillos DIN 912 M6 y M8 o similares.

Mounting holes for screws DIN 912 M6 and M8 or similar.

Placa de Montaje	Medida Size	Distancia entre agujeros [mm] Hole Spacing [mm]	Rosca Thread	Peso [g] Weight [g]	Epoxy Negro Powder Coated	Cincado Zinc Plated
Agujeros para M6 Holes for M6	L x B= 30 x 60	A= 30	M 8	101,0	FPMZ-30.60.8.6.N	FPMZ-30.60.8.6.ZB
			M 10	99,0	FPMZ-30.60.10.6.N	FPMZ-30.60.10.6.ZB
			M 12	97,0	FPMZ-30.60.12.6.N	FPMZ-30.60.12.6.ZB
			M 14	95,0	FPMZ-30.60.14.6.N	FPMZ-30.60.14.6.ZB
			M 16	93,0	FPMZ-30.60.16.6.N	FPMZ-30.60.16.6.ZB
Agujeros para M8 Holes for M8	L x B= 30 x 60	A= 30	M 8	100,0	FPMZ-30.60.8.8.N	FPMZ-30.60.8.8.ZB
			M 10	98,0	FPMZ-30.60.10.8.N	FPMZ-30.60.10.8.ZB
			M 12	96,0	FPMZ-30.60.12.8.N	FPMZ-30.60.12.8.ZB
			M 14	94,0	FPMZ-30.60.14.8.N	FPMZ-30.60.14.8.ZB



Aplicación
Application



Placa de Montaje	Medida Size	Distancia entre agujeros [mm] Hole Spacing [mm]	Rosca Thread	Peso [g] Weight [g]	Epoxy Negro Powder Coated	Cincado Zinc Plated
Agujeros para M6 Holes for M6	L x B= 60 x 60	A= 30	M 8	183,0	FPMZ-60.60.8.6.N	FPMZ-60.60.8.6.ZB
			M 10	191,0	FPMZ-60.60.10.6.N	FPMZ-60.60.10.6.ZB
			M 12	179,0	FPMZ-60.60.12.6.N	FPMZ-60.60.12.6.ZB
			M 14	177,0	FPMZ-60.60.14.6.N	FPMZ-60.60.14.6.ZB
			M 16	175,0	FPMZ-60.60.16.6.N	FPMZ-60.60.16.6.ZB
Agujeros para M8 Holes for M8	L x B= 60 x 60	A= 30	M 8	181,0	FPMZ-60.60.8.8.N	FPMZ-60.60.8.8.ZB
			M 10	179,0	FPMZ-60.60.10.8.N	FPMZ-60.60.10.8.ZB
			M 12	177,0	FPMZ-60.60.12.8.N	FPMZ-60.60.12.8.ZB
			M 14	175,0	FPMZ-60.60.14.8.N	FPMZ-60.60.14.8.ZB
			M 16	173,0	FPMZ-60.60.16.8.N	FPMZ-60.60.16.8.ZB