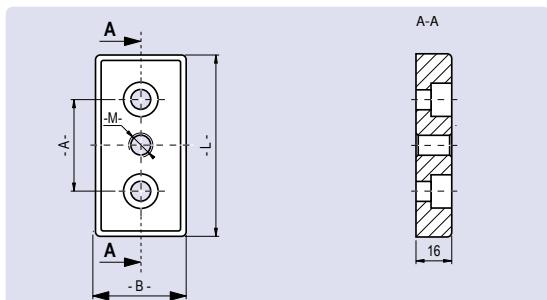
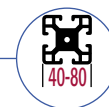


Placa de Montaje 40

Zamak

Transport and Base Plate 40

Die-Cast Zinc



Aplicación
Application



Aplicación Para montar pies niveladores, ruedas para perfil, ganchos o componentes similares
Estos se conectan a los perfiles por un extremo

Application To mount levelling feet, rollers, hooks or similar components
Connects to the profile sideways

Material Zamak

Material Die-cast zinc

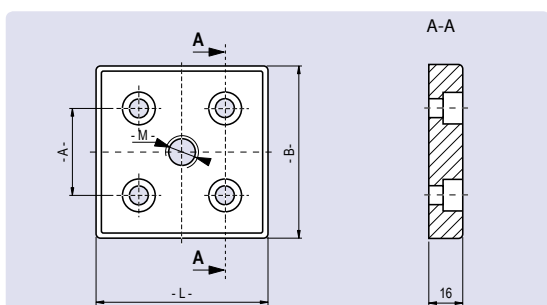
Recubrimiento Epoxy negro / Cincado

Surface Black powder coated / zinc plated

Agujeros de montaje para tornillos DIN 912 M8 y M12 o similares

Mounting holes for screws DIN 912 M8 and M12 or similar.

Placa de Montaje	Medida Size	Distancia entre agujeros [mm] Hole Spacing [mm]	Rosca Thread	Peso [g] Weight [g]	Epoxy Negro Powder Coated	Cincado Zinc Plated
Agujeros para M8 Holes for M8	L x B= 40 x 80	A= 40	M 8	213,0	FPMZ-40.80.8.8.N	FPMZ-40.80.8.8.ZB
			M 10	211,0	FPMZ-40.80.10.8.N	FPMZ-40.80.10.8.ZB
			M 12	209,0	FPMZ-40.80.12.8.N	FPMZ-40.80.12.8.ZB
			M 14	203,0	FPMZ-40.80.14.8.N	FPMZ-40.80.14.8.ZB
			M 16	199,0	FPMZ-40.80.16.8.N	FPMZ-40.80.16.8.ZB
Agujeros para M12 Holes for M12	L x B= 40 x 80	A= 40	M 8	192,0	FPMZ-40.80.8.12.N	FPMZ-40.80.8.12.ZB
			M 10	190,0	FPMZ-40.80.10.12.N	FPMZ-40.80.10.12.ZB
			M 12	188,0	FPMZ-40.80.12.12.N	FPMZ-40.80.12.12.ZB
			M 14	182,0	FPMZ-40.80.14.12.N	FPMZ-40.80.14.12.ZB
			M 16	178,0	FPMZ-40.80.16.12.N	FPMZ-40.80.16.12.ZB



Aplicación
Application



Placa de Montaje	Medida Size	Distancia entre agujeros [mm] Hole Spacing [mm]	Rosca Thread	Peso [g] Weight [g]	Epoxy Negro Powder Coated	Cincado Zinc Plated
Agujeros para M8 Holes for M8	L x B= 80 x 80	A= 40	M 8	438,0	FPMZ-80.80.8.8.N	FPMZ-80.80.8.8.ZB
			M 10	436,0	FPMZ-80.80.10.8.N	FPMZ-80.80.10.8.ZB
			M 12	433,0	FPMZ-80.80.12.8.N	FPMZ-80.80.12.8.ZB
			M 14	437,0	FPMZ-80.80.14.8.N	FPMZ-80.80.14.8.ZB
			M 16	425,0	FPMZ-80.80.16.8.N	FPMZ-80.80.16.8.ZB
			M 20	416,0	FPMZ-80.80.20.8.N	FPMZ-80.80.20.8.ZB
Agujeros para M12 Holes for M12	L x B= 80 x 80	A= 40	M 8	365,0	FPMZ-80.80.8.12.N	FPMZ-80.80.8.12.ZB
			M 10	363,0	FPMZ-80.80.10.12.N	FPMZ-80.80.10.12.ZB
			M 12	361,0	FPMZ-80.80.12.12.N	FPMZ-80.80.12.12.ZB
			M 14	355,0	FPMZ-80.80.14.12.N	FPMZ-80.80.14.12.ZB
			M 16	348,0	FPMZ-80.80.16.12.N	FPMZ-80.80.16.12.ZB
			M 20	334,0	FPMZ-80.80.20.12.N	FPMZ-80.80.20.12.ZB