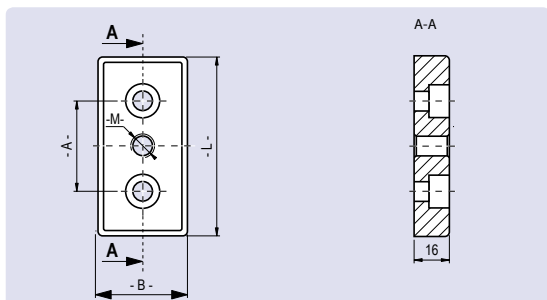
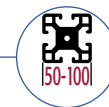


Placa de Montaje 50

Zamak

Transport and Base Plate 50

Die-Cast Zinc



Aplicación
Application



Aplicación Para montar pies niveladores, ruedas para perfil, ganchos o componentes similares
Estos se conectan a los perfiles por un extremo

Application To mount levelling feet, rollers, hooks or similar components
Connects to the profile sideways

Material Zamak

Material Die-cast zinc

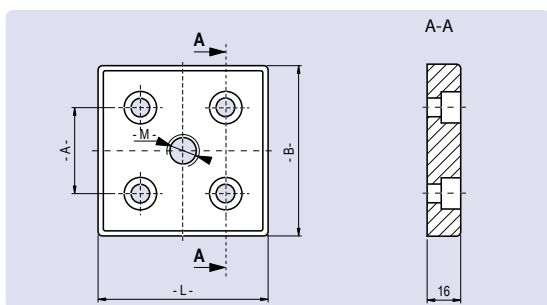
Recubrimiento Epoxy negro / Cincado

Surface Black powder coated / zinc plated

Agujeros de montaje para tornillos DIN 912 M8 y M12 o similares

Mounting holes for screws DIN 912 M8 and M12 or similar.

Placa de Montaje	Medida Size	Distancia entre agujeros [mm] Hole Spacing [mm]	Rosca Thread	Peso [g] Weight [g]	Epoxy Negro Powder Coated	Cincado Zinc Plated
Agujeros para M8 Holes for M8	L x B= 50 x 100	A= 50	M 10	310,0	FPMZ-50.100.10.8.N	FPMZ-50.100.10.8.ZB
			M 12	306,0	FPMZ-50.100.12.8.N	FPMZ-50.100.12.8.ZB
			M 14	300,0	FPMZ-50.100.14.8.N	FPMZ-50.100.14.8.ZB
			M 16	296,0	FPMZ-50.100.16.8.N	FPMZ-50.100.16.8.ZB
			M 20	289,0	FPMZ-50.100.20.8.N	FPMZ-50.100.20.8.ZB
Agujeros para M12 Holes for M12	L x B= 50 x 100	A= 50	M 10	296,0	FPMZ-50.100.10.12.N	FPMZ-50.100.10.12.ZB
			M 12	292,0	FPMZ-50.100.12.12.N	FPMZ-50.100.12.12.ZB
			M 14	286,0	FPMZ-50.100.14.12.N	FPMZ-50.100.14.12.ZB
			M 16	280,0	FPMZ-50.100.16.12.N	FPMZ-50.100.16.12.ZB
			M 20	273,0	FPMZ-50.100.20.12.N	FPMZ-50.100.20.12.ZB



Aplicación
Application



Placa de Montaje	Medida Size	Distancia entre agujeros [mm] Hole Spacing [mm]	Rosca Thread	Peso [g] Weight [g]	Epoxy Negro Powder Coated	Cincado Zinc Plated
Agujeros para M8 Holes for M8	L x B= 100 x 100	A= 50	M 10	548,0	FPMZ-100.100.10.8.N	FPMZ-100.100.10.8.ZB
			M 12	545,0	FPMZ-100.100.12.8.N	FPMZ-100.100.12.8.ZB
			M 14	541,0	FPMZ-100.100.14.8.N	FPMZ-100.100.14.8.ZB
			M 16	540,0	FPMZ-100.100.16.8.N	FPMZ-100.100.16.8.ZB
			M 20	531,0	FPMZ-100.100.20.8.N	FPMZ-100.100.20.8.ZB
Agujeros para M12 Holes for M12	L x B= 100 x 100	A= 50	M 10	541,0	FPMZ-100.100.10.12.N	FPMZ-100.100.10.12.ZB
			M 12	538,0	FPMZ-100.100.12.12.N	FPMZ-100.100.12.12.ZB
			M 14	531,0	FPMZ-100.100.14.12.N	FPMZ-100.100.14.12.ZB
			M 16	527,0	FPMZ-100.100.16.12.N	FPMZ-100.100.16.12.ZB
			M 20	521,0	FPMZ-100.100.20.12.N	FPMZ-100.100.20.12.ZB