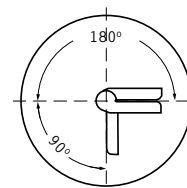
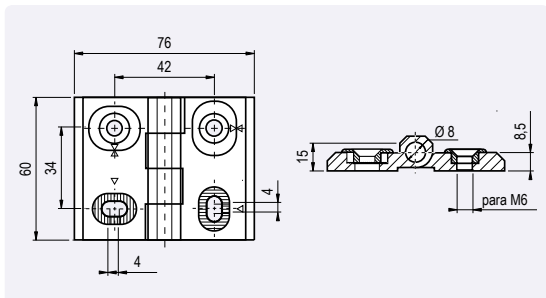
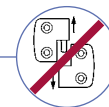


Bisagra 2D

Zamak, fija

2D Hinge

Die-cast zinc, non-detachable



Descripción Bisagra ajustable con casquillos

Material Cuerpo: Zamak
Pasador: Acero Cincado

Recubrimiento Epoxy negro

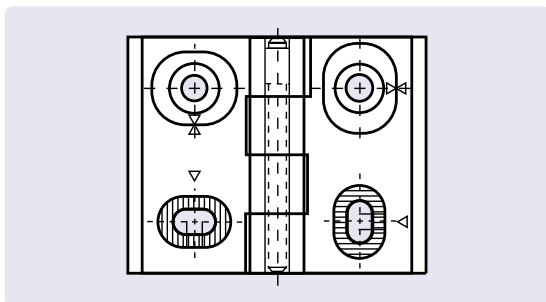
Carga Máx. 300 Nm

Description Adjustable hinge with bushes

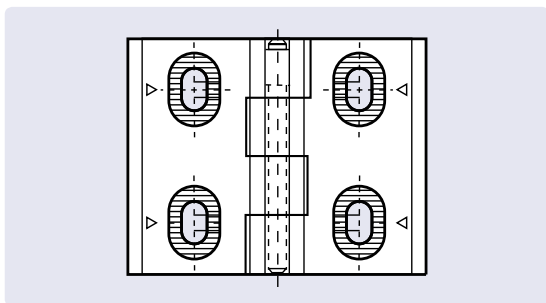
Material Plates: Die-cast zinc
Bolt: Zinc plated steel

Surface Black powder coated

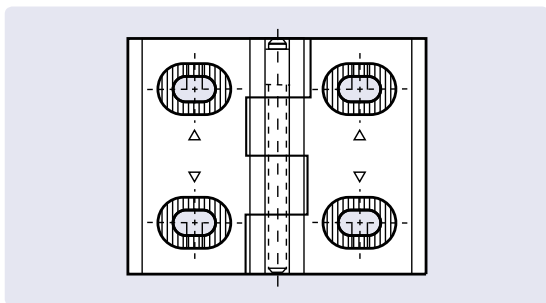
Max. load 300 Nm



Bisagra 2D - 2D Hinge	Peso [g] Weight [g]	Referencia Part N°
Ajustable en 2 direcciones Adjustable in two directions	190,0	FBI2DZ-76.60.M



Bisagra 2D - 2D Hinge	Peso [g] Weight [g]	Referencia Part N°
Ajustable verticalmente Only adjustable vertically	190,0	FBI2DZ-76.60.V



Bisagra 2D - 2D Hinge	Peso [g] Weight [g]	Referencia Part N°
Ajustable horizontalmente Only adjustable horizontally	190,0	FBI2DZ-76.60.H