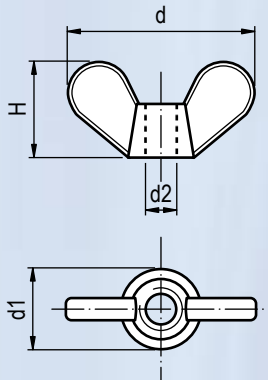


DIN 315

Tuerca de Mariposa de Nylon



Rosca Pasante



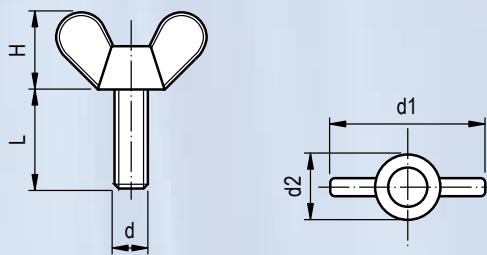
Referencia	d2	d	d1	H
315N-4	M4	25	10	12
315N-5	M5	25	10	12
315N-6	M6	25	10	12
315N-8	M8*	25	10	12

** En M8 pueden existir pequeñas tolerancias dimensionales.
Otros colores RAL y colores especiales bajo consulta.

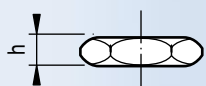
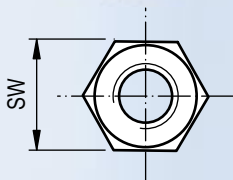
Material: Poliamida 6.6
Color: Blanco Natural

OTROS ARTICULOS BAJO PEDIDO
¡CONSÚLTENOS!

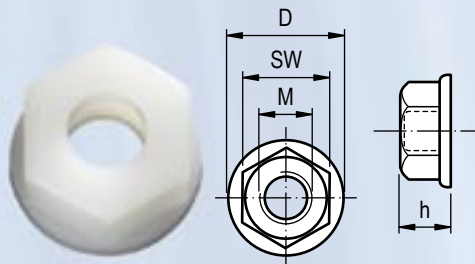
TORNILLO DIN 316



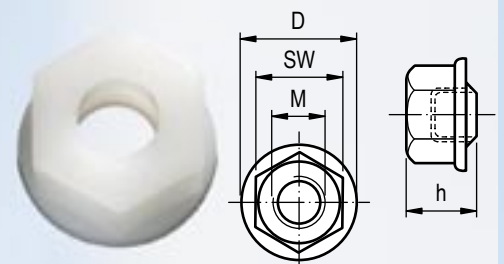
TUERCA DIN 24036 (DIN 439)*



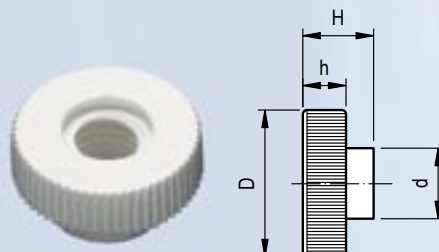
TUERCA CON ARANDELA



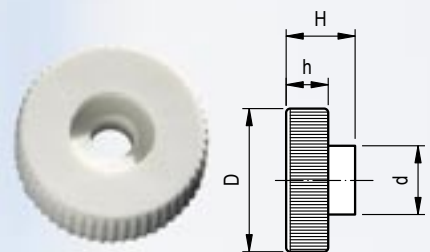
TUERCA AUTOBLOCANTE CON ARANDELA



TUERCA DIN 466**



TUERCA DIN 467**



* Antigua / ** Similar a Norma