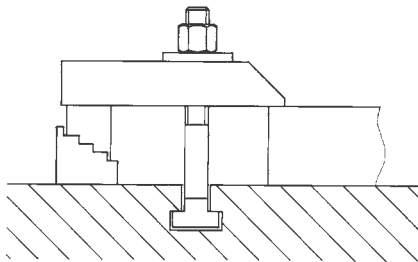
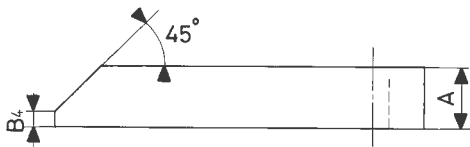
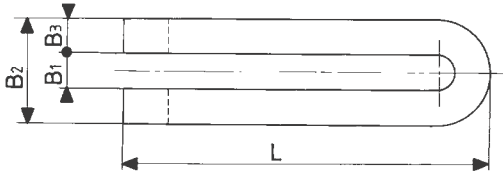
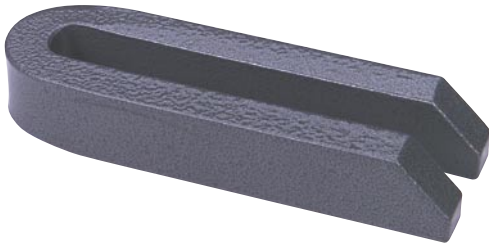


BRIDAS

Brida horquilla DIN 6315-B



Ejemplo de aplicación

| REFERENCIA | B1 | L | Tornillo | A | B2 | B3 | B4 | Gram. |
|---------------|-----|------|----------|----|-----|----|----|-------|
| 6315B-7.60 | 7 | 60 | M6 | 12 | 19 | 6 | 3 | 60 |
| 6315B-9.80 | 9 | 80 | M8 | 15 | 25 | 8 | 4 | 140 |
| 6315B-11.100 | 11 | 100 | M10 | 20 | 31 | 10 | 5 | 300 |
| 6315B-14.125 | 14 | 125 | M12 M14 | 25 | 38 | 12 | 6 | 570 |
| 6315B-14.160 | 14 | 160 | M12 M14 | 25 | 38 | 12 | 6 | 730 |
| 6315B-14.200 | 14 | 200 | M12 M14 | 25 | 38 | 12 | 6 | 910 |
| 6315B-18.160 | 18 | 160 | M16 M18 | 30 | 48 | 15 | 8 | 1080 |
| 6315B-18.200 | 18 | 200 | M16 M18 | 30 | 48 | 15 | 8 | 1360 |
| 6315B-18.250 | 18 | 250 | M16 M18 | 40 | 48 | 15 | 10 | 2250 |
| 6315B-22.200 | 22 | 200 | M20 M22 | 40 | 52 | 15 | 10 | 1800 |
| 6315B-22.250 | 22 | 250 | M20 M22 | 40 | 62 | 20 | 10 | 3000 |
| 6315B-22.315 | 22 | 315 | M20 M22 | 40 | 62 | 20 | 10 | 3850 |
| 6315B-22.500 | 22 | 500 | M20 M22 | 50 | 62 | 20 | 10 | 7500 |
| 6315B-26.200 | 26 | 200 | M24 | 40 | 66 | 20 | 10 | 2400 |
| 6315B-26.250 | 26 | 250 | M24 | 40 | 66 | 20 | 10 | 3000 |
| 6315B-26.315 | 26 | 315 | M24 | 40 | 66 | 20 | 10 | 3850 |
| 6315B-26.500 | 26 | 500 | M24 | 50 | 66 | 20 | 10 | 7500 |
| 6315B-34.250 | 34 | 250 | M30 | 50 | 74 | 20 | 12 | 3700 |
| 6315B-34.315 | 34 | 315 | M30 | 50 | 74 | 20 | 12 | 4750 |
| 6315B-34.400 | 34 | 400 | M30 | 50 | 74 | 20 | 12 | 6100 |
| 6315B-34.600 | 34 | 600 | M30 | 50 | 74 | 20 | 12 | 9200 |
| 6315B-34.1000 | 34 | 1000 | M30 | 60 | 94 | 30 | 12 | 28000 |
| 6315B-40.400 | 40 | 400 | M36 | 60 | 100 | 30 | 12 | 11000 |
| 6315B-40.600 | 40 | 600 | M36 | 60 | 100 | 30 | 12 | 16500 |
| 6315B-43.600 | 43* | 600 | M36 M42 | 80 | 123 | 40 | 12 | 29600 |

* Medida fuera de norma DIN.