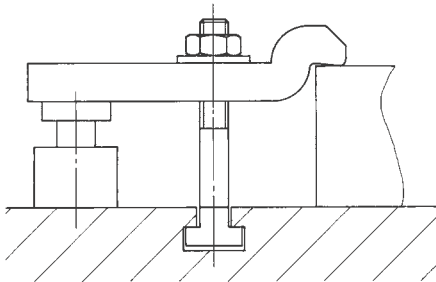
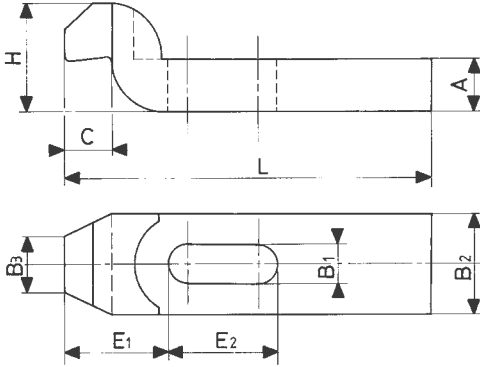
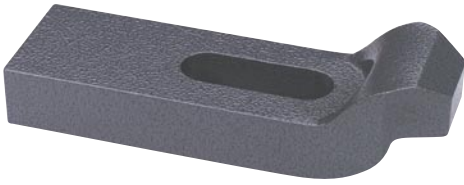


BRIDAS

Brida con nariz acodada DIN 6316



Ejemplo de aplicación

Referencia	B1	L	Tornillo	A	B2	B3	C	E1	E2	H	Gram.
6316-7.60	7	60	M6	10	20	10	8	20	20	20	80
6316-9.80	9	80	M8	12	25	12	9	25	25	24	160
6316-11.100	11	100	M10	15	30	15	12	32	32	30	300
6316-14.125	14	125	M12 M14	20	40	20	16	40	40	40	680
6316-18.125	18	125	M16 M18	25	50	25	20	49	40	50	1050
6316-18.160	18	160	M16 M18	25	50	25	20	49	50	50	1400
6316-22.160	22	160	M20 M22	30	60	30	24	55	55	60	2000
6316-22.200	22	200	M20 M22	30	60	30	24	55	70	60	2400
6316-26.200	26	200	M24	35	70	35	28	72	60	70	3400
6316-26.250	26	250	M24	35	70	35	28	72	80	70	4300
6316-34.250	34	250	M30	40	80	40	40	91	80	80	5400
6316-34.315	34	315	M30	50	80	40	40	91	100	100	9000
6316-43.400	43*	400	M36 M42	60	100	50	50	105	120	120	16400

* Medida fuera de norma DIN