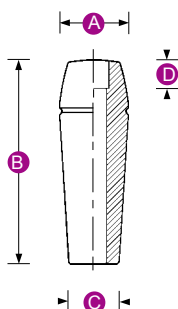


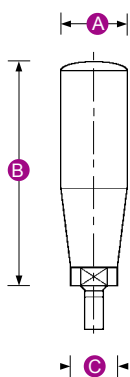
Tipo	Referencia	A	B	C	D	E	F	Rosca o Taladro	Longitud del espárrago
------	------------	---	---	---	---	---	---	-----------------	------------------------

**Manilla Giratoria Agujero Liso** Duroplasto acabado brillante



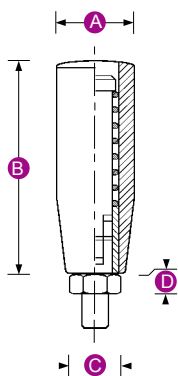
<b>HEMBRA</b>	<b>I303/S</b>	18	40	12	8	10		5 6	
Agujero moldeado	<b>I304/S</b>	20	60	14	8	10		5 6 8	
	<b>I305/S</b>	24	80	18	13	13		6 8 10	
	<b>I306/S</b>	28	95	20	13	16		8 10 12	
	<b>I307/S</b>	30	110	22	15	18		10 12	

**Manilla Giratoria** Termoplástico acabado mate - alta resistencia al impacto

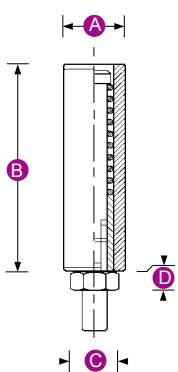


<b>MACHO</b>	<b>3155/M</b>	20	55	12				M6	12
Espárrago cincado	<b>3167/M</b>	23	67	18				M8	15
	<b>3177/M</b>	25	77	18				M8 M10	15
	<b>3187/M</b>	27	87	20				M10 M12	15
	<b>3197/M</b>	29	97	20				M10 M12	15

**Manilla Giratoria Abatible** Termoplástico acabado mate - alta resistencia al impacto



<b>MACHO</b>	<b>3250/M</b>	20	50	14	6			M6	9
Espárrago cincado	<b>3270/M</b>	25	70	20	6			M8	10



<b>MACHO</b>	<b>3282/M</b>	25	82	25	7			M10	17
Espárrago cincado	<b>3290/M</b>	25	90	25	7			M10	17