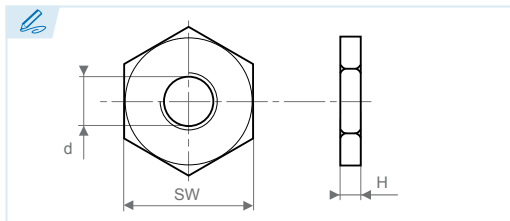
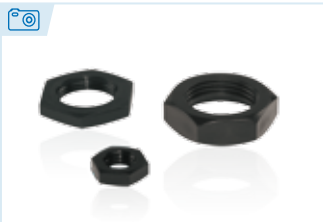




ISO 4036 (DIN 439)*



Tuerca baja hexagonal de nylon
Hexagonal nuts
Écrou hexagonal bas
Porca baixa hexagonal de nylon

***Similar a ISO 4036 (antigua DIN 439)**

*Similar to ISO 4036 (former DIN 439)

*Similaire ISO 4036 (ancienne DIN 439)

*Semelhante ISO 4036 (antiga DIN 439)

Material estándar: Poliamida
Standard material: Polyamide
Matière standard: Polyamide
Material padrão: Poliamida

Color: Negro

Colour: Black

Couleur: Noir

Cor: Preto

Otros materiales, dimensiones y colores RAL o especiales bajo consulta.
Other materials, dimensions and RAL or special colours upon request.
Sur demande autres matières, dimensions, couleurs RAL ou spéciaux.
Outros materiais, dimensões e cores RAL ou especiais, disponíveis sob consulta.

Ref.	d	SW	H
439N-8-100-13	M8 (x1,0)	13	4,0
439N-10-150-14	M10 (x1,5)	14	2,5
439N-10-75-14	M10 (x0,75)	14	2,5
439N-12-100-16	M12 (x1,0)	16	5,0
439N-12-100-17	M12 (x1,0)	17	4,0
439N-14-100-22	M14 (x1,0)	22	5,0

Ref.	d	SW	H
439N-14-150-22	M14 (x1,5)	22	5,0
439N-15-100-18	M15 (x1,0)	18	3,0
439N-16-100-24	M16 (x1,0)	24	4,0
439N-18-100-24	M18 (x1,0)	24	4,0
439N-20-150-27	M20 (x1,5)	27	8,0
439N-30-150-36	M30 (x1,5)	36	5,0

