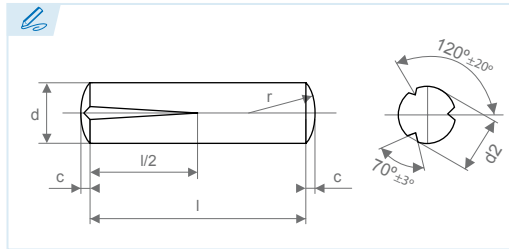




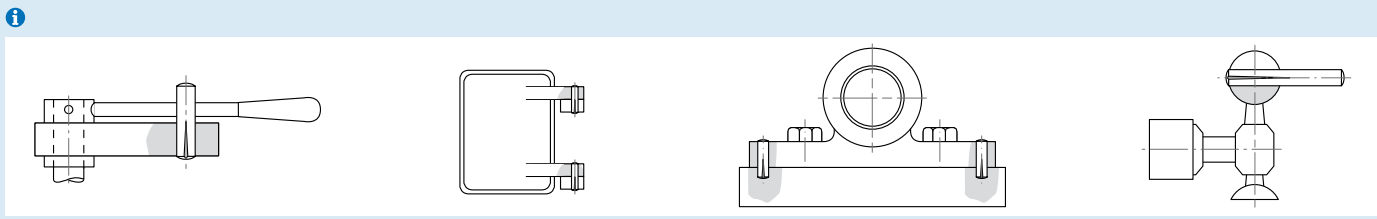
DIN 1472



**Pasador ajustado estriado**  
Grooved pins, half length taper grooved  
Goupille d'ajustage cannelée  
Cavilha ajustada estriada

**Material: 9SMnPb28K**  
Material: 9SMnPb28K  
Matière: 9SMnPb28K  
Material: 9SMnPb28K

d	M	*0,8	*1	*1,2	1,5	2	2,5	3	4	5	6	8	10	12	*13	14	16	20	25	M	d		
tol.	tol.	*	*	*	h9					h11										tol.	d		
d <sub>2</sub>	tol.	+0,05 0				± 0,05										± 0,1					tol.	d <sub>2</sub>	
c	≈	*	*	*	0,2	0,25	0,3	0,4	0,5	0,6	0,8	1	1,2	1,6	*	1,6	2	2,5	3	≈	c		
r	≈	d																				≈	r
 js15		•04	•04	•04	•04	•04	•04	•04	•08	•08	10	12	•14	•18	•20	25	30	30	30	 js15			
		•06	•06	•06	06	06	06	06	10	10	12	•14	16	20	•22	•26	•32	•32	•32				
		•08	•08	•08	08	08	08	08	12	12	•14	•16	•18	•22	•24	•28	35	35	35				
		•10	•10	•10	10	10	10	10	•14	•14	•16	•18	20	•24	25	30	•36	•36	•36				
		•12	•12	•12	12	12	12	12	•16	•16	•18	20	•22	25	•26	•32	40	40	40				
			•14	•14	•14	•14	•14	•14	•18	•18	20	•22	•24	•26	•28	35	45	45	45				
			•16	•16	•16	•16	•16	•16	20	20	•22	•24	25	•28	•30	•36	50	50	50				
			•18	•18	•18	•18	•18	•18	•22	•22	•24	25	•26	30	•32	40	55	55	55				
			•20	•20	20	20	20	20	•24	•24	25	•26	•28	•32	•35	45	60	60	60				
						•22	•22	•22	25	25	•26	•28	30	35	•36	50	65	65	65				
						•24	•24	•24	•26	•26	•28	30	•32	•36	•40	55	70	70	70				
						25	25	25	•28	•28	30	•32	35	40	•45	60	75	75	75				
						•26	•26	•26	30	30	•32	35	•36	45	•50	65	80	80	80				
						•28	•28	•28	•32	•32	35	•36	40	50	•55	70	90	90	90				
						30	30	30	35	35	•36	40	45	55	•60	75	100	100	100				
									•32	•36	•36	40	45	50	60	•65	80	110	110				
									35	40	40	45	50	55	65	•70	90	120	120				
									•36	45	45	50	55	60	70	•75	100	140	140				
									40	50	50	55	60	65	75	•80	110	160	160				
										55	55	60	65	70	80	•90	120	180	•180				
									60	60	65	70	75	90	•100	140							
											70	75	80	100	•110	160							
												75	80	90	110	•120	180						
													80	90	100	120	•140						
														100	110	140	•160						
															120	160	•180						
																140	180						
																	160						



**!** Las longitudes en negrita son las más utilizadas.  
Bold numbers represent the most commonly used lengths.  
En noir les longueurs les plus utilisées.  
Os comprimentos em negrito são os mais utilizados.

**📞** Otras medidas bajo consulta.  
Other dimensions by request.  
Autres dimensions sur demande.  
Outras medidas, sob consulta.

• Longitudes fuera de norma DIN.  
Lengths outside DIN standard.  
Longueur hors norme DIN.  
Comprimentos fora da norma DIN.

\* Diámetro fuera de norma DIN. Medidas a elección del fabricante.  
Diameter outside DIN standard. Dimensions selected by the manufacturer.  
Dimensions hors norme DIN et suivant offre du fabricant.  
Diâmetro fora da norma DIN. Medidas à escolha do fabricante.

**Ref. ?**

ejemplo example exemplo

Ref. = K720 -XX-XXX

d l

**DIN 1472 8x40**

**Ref. = K720-8-40**