

100-100

Placa de montaje 100x100
 Transport and base plate 100x100
 Plaque de base 100x100
 Placa de montagem

Material: Zamak
 Material: Die-cast zinc
 Matériau: Zinc injecté
 Material: Zamak

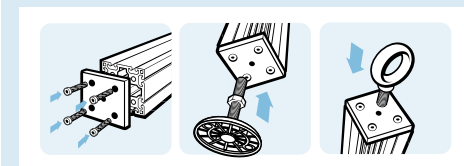
Acabado: Sin recubrimiento / Epoxi negro
 Surface: Plain / Black powder coated
 Finition: Brut / Epoxy noir
 Acabamento: Sem revestimento / Epóxi preto

· Sin recubrimiento
 Plain
 Brute
 Sem revestimento

· Epoxi negro
 Black powder coated
 Epoxy noir
 Epóxi preto

M	ØD	Ref.	gr.	Ref.	gr.
M10	9 (M8)	FPMZ-100-100-10-8-BR	548,0	FPMZ-100-100-10-8-N	548,0
M12	9 (M8)	FPMZ-100-100-12-8-BR	545,0	FPMZ-100-100-12-8-N	545,0
M14	9 (M8)	FPMZ-100-100-14-8-BR	541,0	FPMZ-100-100-14-8-N	541,0
M16	9 (M8)	FPMZ-100-100-16-8-BR	540,0	FPMZ-100-100-16-8-N	540,0
M20	9 (M8)	FPMZ-100-100-20-8-BR	531,0	FPMZ-100-100-20-8-N	531,0
M10	14,5 (M12)	FPMZ-100-100-10-12-BR	541,0	FPMZ-100-100-10-12-N	541,0
M12	14,5 (M12)	FPMZ-100-100-12-12-BR	538,0	FPMZ-100-100-12-12-N	538,0
M14	14,5 (M12)	FPMZ-100-100-14-12-BR	531,0	FPMZ-100-100-14-12-N	531,0
M16	14,5 (M12)	FPMZ-100-100-16-12-BR	527,0	FPMZ-100-100-16-12-N	527,0
M20	14,5 (M12)	FPMZ-100-100-20-12-BR	521,0	FPMZ-100-100-20-12-N	521,0

Otros acabados y colores bajo consulta.
 Other surfaces, other colors on request.
 Autres surfaces et revêtements sur demande.
 Outros acabamentos e cores disponíveis sob consulta.



Para montar pies niveladores, rodillos, grilletes y componentes similares. La placa de montaje se fija en el extremo del perfil.
 To mount leveling feet, rollers, hooks or similar components; connects to the profile sideways.
 Montage de pieds réglables, galets, crochets ou composants similaires. La plaque se fixe à l'extrémité du profilé.
 Para montar pés niveladores, rolos, manilhas e componentes similares. A placa de montagem é fixada na extremidade do perfil.

