

### Placa de montaje 90x90

Transport and base plate 90x90  
Plaque de base 90x90  
Placa de montagem 45x90

#### Material: Zamak

Material: Die-cast zinc  
Matériau: Zinc injecté  
Material: Zamak

#### Acabado: Sin recubrimiento / Epoxi negro

Surface: Plain / Black powder coated  
Finition: Brut / Epoxy noir  
Acabamento: Sem revestimento / Epóxi preto

#### · Sin recubrimiento

Plain  
Brute  
Sem revestimento

#### · Epoxi negro

Black powder coated  
Epoxy noir  
Epóxi preto

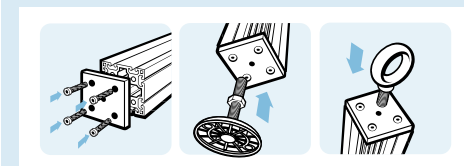
M	ØD	Ref.	gr.	Ref.	gr.
M10	9 (M8)	FPMZ-90-90-10-8-BR	522,0	FPMZ-90-90-10-8-N	522,0
M12	9 (M8)	FPMZ-90-90-12-8-BR	520,0	FPMZ-90-90-12-8-N	520,0
M14	9 (M8)	FPMZ-90-90-14-8-BR	519,0	FPMZ-90-90-14-8-N	519,0
M16	9 (M8)	FPMZ-90-90-16-8-BR	516,0	FPMZ-90-90-16-8-N	516,0
M20	9 (M8)	FPMZ-90-90-20-8-BR	510,0	FPMZ-90-90-20-8-N	510,0
M10	14,5 (M12)	FPMZ-90-90-10-12-BR	482,0	FPMZ-90-90-10-12-N	482,0
M12	14,5 (M12)	FPMZ-90-90-12-12-BR	480,0	FPMZ-90-90-12-12-N	480,0
M14	14,5 (M12)	FPMZ-90-90-14-12-BR	475,0	FPMZ-90-90-14-12-N	475,0
M16	14,5 (M12)	FPMZ-90-90-16-12-BR	471,0	FPMZ-90-90-16-12-N	471,0
M20	14,5 (M12)	FPMZ-90-90-20-12-BR	463,0	FPMZ-90-90-20-12-N	463,0

Otros acabados y colores bajo consulta.

Other surfaces, other colors on request.

Autres surfaces et revêtements sur demande.

Outros acabamentos e cores disponíveis sob consulta.



Para montar pies niveladores, rodillos, grilletes y componentes similares. La placa de montaje se fija en el extremo del perfil.

To mount leveling feet, rollers, hooks or similar components; connects to the profile sideways.

Montage de pieds réglables, galets, crochets ou composants similaires. La plaque se fixe à l'extrémité du profilé.

Para montar pés niveladores, rolos, manilhas e componentes similares. A placa de montagem é fixada na extremidade do perfil.

