

Rueda guía para perfil

Roller
Galets de guidage pour profilés
Roda guia para perfil

Material: Nylon PA, reforzado con fibra de vidrio

Material: Nylon PA, glass fibre reinforced

Matériau: Polyamide renforcé de fibre de verre

Material: Nylon PA, reforçado com fibra de vidro

Color: Negro

Colour: Black

Couleur: Noire

Cor: Preto

ES EN FR PT

Canal
Slot
Rainure
Ranhura

Ø19

Ref.		gr.
FRP-19-5	5	4,2

Ø29

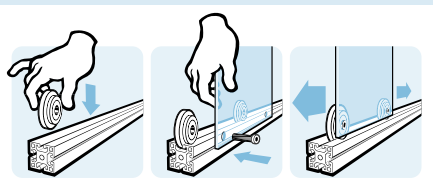
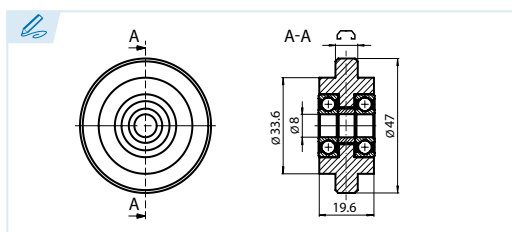
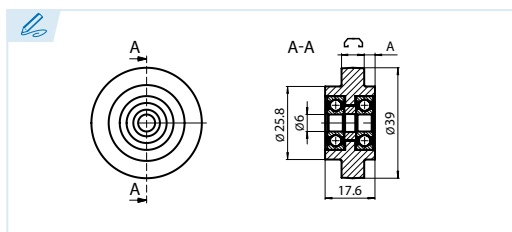
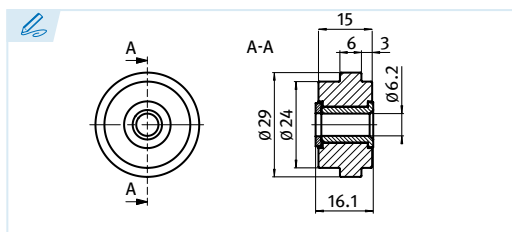
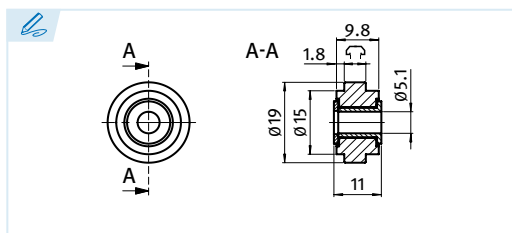
Ref.		gr.
FRP-29-6	6	8,5

Ø39

Ref.		gr.
FRP-39-8	8	30,0
FRP-39-10	10	31,8
FRP-39-12	12	33,2

Ø47

Ref.		gr.
FRP-47-8	8	48,3
FRP-47-10	10	50,0



Para guiar las partes móviles en la ranura del perfil de aluminio. Las medidas Ø19 y Ø29 disponen de casquillo y arandela en acero cincado; las ruedas guía Ø39 y Ø47 van equipadas con rodamientos.

To guide moving parts in the slot of the aluminum profile. Sizes Ø19 and Ø29 have zinc plated steel bush and washer; Ø39 and Ø47 rollers are equipped with ball bearing.

Pour le guidage des parties mobiles dans les rainures des profilés. Les dimensions Ø19 y Ø29 disposent d'un insert et une rondelle zingué, les dimensions Ø39 y Ø47 sont montées avec des roulements.

Para guiar as partes móveis na ranhura do perfil de alumínio. As medidas Ø19 e Ø29 contam com casquilho e anilha em aço zincado; e as rodas guia Ø39 e Ø47 estão equipadas com rolamentos.

